



REIDsteel

established 1919







About us

Over the past 90 years John Reid and Sons has built a solid worldwide reputation for providing outstanding value and exceptional service in the design, fabrication and erection of bespoke steel framed structures, their cladding and integrated glazing systems, along with personnel and vehicle doors.

Combining the above resources effectively has placed us in a strong position within the industry and has resulted in many major contracts.

These are just a few clients that have experienced the level of professionalism and service that we are able to offer. They can remain confident that their investment will be looked after, delivered to site, and erected efficiently, on time in a cost effective manner, making us their first choice when placing their next order.

REIDsteel

established 1919



THE QUEEN'S AWARDS FOR ENTERPRISE:
INTERNATIONAL TRADE 2006, 2008, 2009





Rizon Jet, Biggin Hill Airport, Kent - 89 Metre Clear Span Hangar



Rizon Jet is a new charter operator in the Gulf region, with FBO and maintenance facilities in Europe, focusing on travel for senior executives, high-ranking government officials and professionals.

This 4300m² hangar has an 89 metre door width consisting of six 14.9 metre x 9.6 metre electrically powered doors, which can be operated in unison or independently. This allows 58 metres to be opened left, right or centre at any one time.

The hangar is also served by two 2T overhead travelling cranes, which run the whole length of the 90 metre building.

A striking visual feature of the hangar is the natural light in the two floor office areas, made possible by curtain walling running the whole of one end of the building. All the steelwork, the glazing and curtain walling was designed, made and installed by REIDsteel.

REIDsteel

✓	Structural Design / Detailing
✓	Erection
✓	Structural Steelwork
✓	Roof & Wall Cladding
✓	Glazing
✓	Hangar Doors
✓	Personnel / Entrance Doors



TAG Energy Solutions - 6,840m² Production Facility

Situated upon the north bank of the river Tees is TAG Energy Solutions state of the art, automated tubular production facility for the rolling & welding of large diameter tubulars, and the construction of foundations - monopiles, tripods, jackets and transition pieces - for the renewables and energy industries.

REIDsteel designed, fabricated and erected the 'V' braced tied portal frame which spans 40m x 171m, 18m to

external eaves. As part of the contract REIDsteel also designed, fabricated and erected the doors, crane beams, insulated roof and single skin wall cladding.

The structure has been designed to integrate with TAG's manufacturing process and subsequently incorporates 4 travelling overhead gantry cranes for the moving and lifting of large steel plates and tubular sections during fabrication.

Following fabrication, the large diameter tubes can be safely removed from the

facility and transported out through REIDsteel's electronically operated 20m wide x 14m high slab sliding hangar doors at the gable end.

Despite the challenges of the harshest winter for 31 years triggering near Arctic conditions during the mainframe erection & cladding installation, REIDsteel completed the job ahead of schedule and on budget.



REIDsteel

✓	Structural Design / Detailing
✓	Erection
✓	Structural Steelwork
✓	Roof & Wall Cladding
✓	Hangar Doors
✓	Personnel Doors



Asfordby Storage & Haulage, Distribution Centre, Melton Mowbray, Leicester



This 276,000 cubic metre high bay warehouse was designed, made and erected by REIDsteel for the automated storage, co-packing and distribution of consumer products.

It has a span of 106m, is 155m long and has a clear internal height in excess of 17m, containing robotic storage and retrieval cranes and racking, and substantial goods in and out areas. At one end, the robotic system feeds a 2 storey processing and despatch zone.

In all there are eleven main areas, several multi-storey, covering 4.5 acres. Each area was a building in itself; but with the added complication of them all interlinking with each other; and with conveyer systems passing between them.

REIDsteel worked closely with the client and architect, but also had to work as a close team with the mechanical engineers, conveyor and racking engineers, electrical engineers and fire engineers.

REIDsteel provided and erected as part of the main building, duct supports steelwork and service apertures, conveyor platforms and supporting steelwork, electrical cable steel support systems and tramlines of supporting steel for the sprinkler system. Having this ready in place before the fit-out ensured speedy and efficient installation. Reid's also made and fitted all the aluminium windows and curtain glazing.

About 8000 hours of design and drawing work were needed to take the project

from an empty field to the completed and clad structure and we plotted some of the complicated ductwork in 3D to ensure a safe passage around the maze of steelwork.

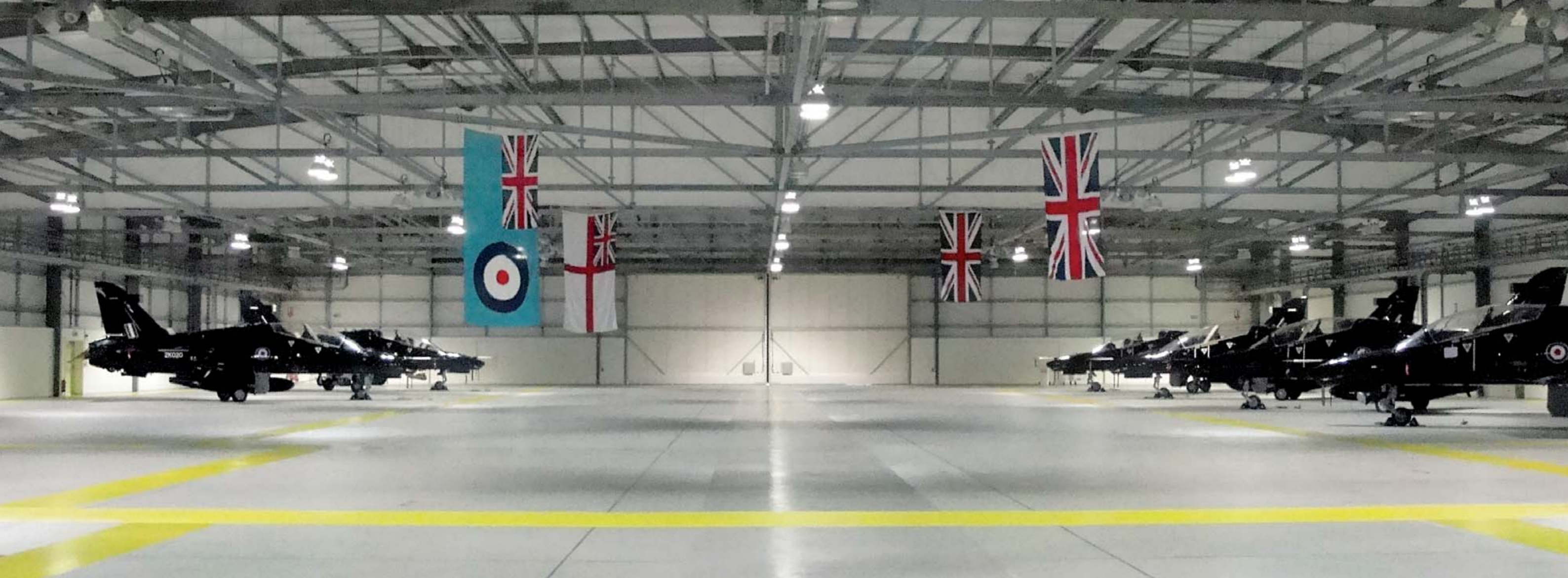
The 1200 tonne steel structure used 55,000 bolts (11 tonnes) and required 30,000m² of cladding, plus 20kms of beams and box section, 27kms of purlins and 4.6kms of bracing. Reid also provided 20 flights of stairs, 20 sectional doors, 5 dock levellers, 5 fire roller shutters, 4 rapid rolling crash-out doors and a dozen personnel, fire doors and glazed doors.

The whole project was finished on budget and on time.



REIDsteel

✓	Structural Design / Detailing
✓	Erection
✓	Structural Steelwork
✓	Roof & Wall Cladding
✓	Glazing
✓	Vehicle Doors
✓	Personnel Doors



Royal Air Force, Valley Airport, Anglesey - Hangar & Squadron Building



The 155m long x 55m clear span Maintenance Hanger (left) houses the latest generation of Hawk Trainers for use by the RAF, Royal Navy and Army Air Corps

The 2500m² Squadron building (above & right) contains flight simulator, classroom and gym facilities.



REIDsteel

✓	Structural Design / Detailing
✓	Erection
✓	Structural Steelwork
✓	Roof & Wall Cladding
✓	Personnel Doors



250 metre multi-tier grandstand, Rockingham, UK.



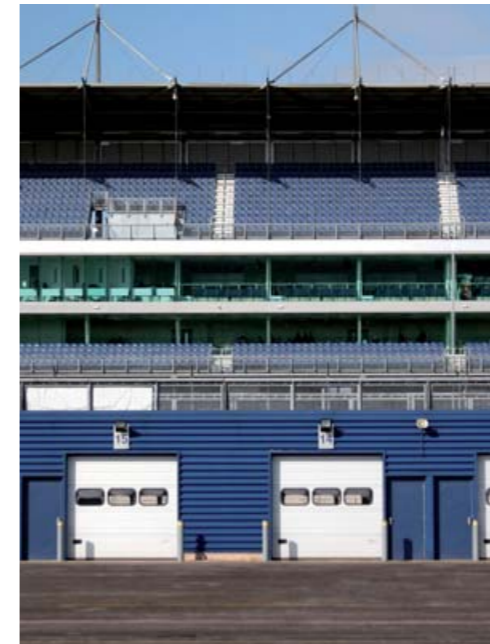
The grandstand at Rockingham Motor Speedway, Corby, Northampton is a quarter of a kilometre long. The main grandstand houses the race control, the press centre, commentary boxes, 50 corporate hospitality suites for 1000 visitors, a restaurant and a private club in addition to seating for 7000.

The rear view of the grandstand (bottom far left) shows the intricate steelwork for the stairs and barriers, all designed, fabricated and fitted by REIDsteel. This, coupled with the shadowline cladding, gives the structure its unique style.

We designed and made the steel structure for the 236 metres long Pits

Building. We also built the structures for the Medical Centre, Administration Building, Race School & Starter's Gantry.

Our grandstand construction projects have ranged from small sports stands locally to large stadium construction projects like Aston Villa Football Club's



Villa Park Stadium, where we undertook the design and build for two of the stands, including the Holte End.

REIDsteel

✓	Structural Design / Detailing
✓	Erection
✓	Structural Steelwork
✓	Roof & Wall Cladding
✓	Glazing
✓	Personnel Doors



Alperton Limited, Ship Repair Facility, Libya



This ship repair facility is 115m long, with a 61.5 meter span. It is 30m to the external eaves.

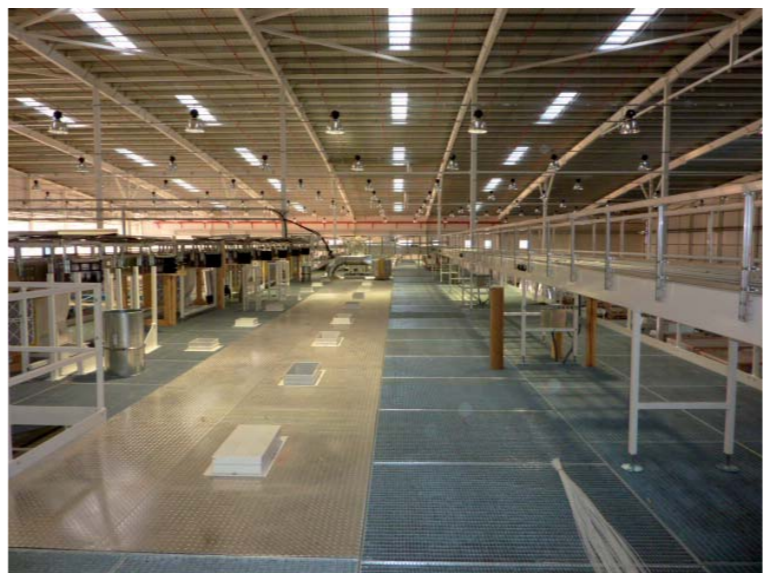
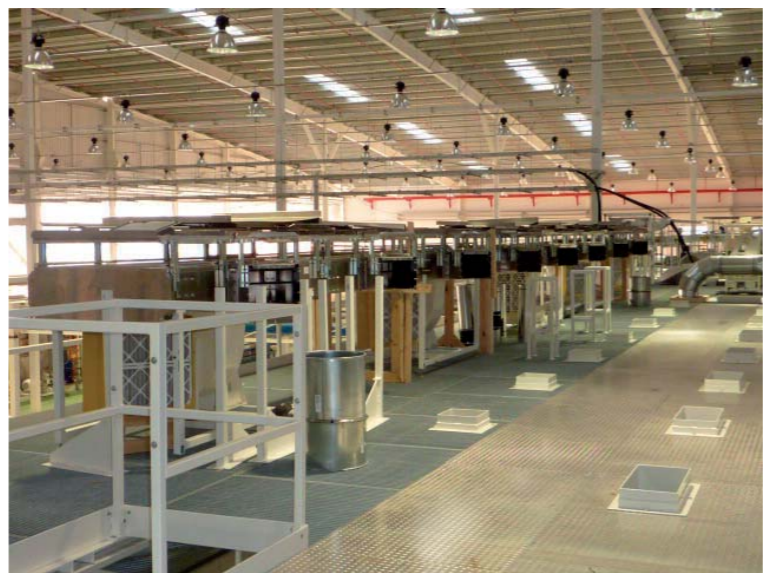
Two lines of internal props support three 10 Tonne electrically operated travelling cranes - each with full downshop travel.

There are internal firefighting walkways, 12m high from finished floor level, external walkable eaves gutters with permanent perimeter roof edge protection.

All hot rolled structural steel was prepared and galvanised to BS EN ISO 1461 (85 microns thickness; 610 gm zinc/m).

REIDsteel

✓	Structural Design / Detailing
✓	Structural Steelwork
✓	Roof & Wall Cladding



Crown Packaging, Beverage Can Manufacturing Facility, Slovakia



This 10,500m² facility in Kosice, Eastern Slovakia for beverage can manufacturing. The structural steelwork, edge protection system, steel walkways, roof and wall cladding, glazing, personnel and vehicle doors, were all loaded into containers at REIDsteel's offices in Christchurch, Dorset. They were then shipped to site by road and sea, and unloaded and erected by local labour under the close supervision of our senior erection managers.

Since completion of this project, our client has placed yet a further order with us to extend the main production area.



REIDsteel

✓	Structural Design / Detailing
✓	Structural Steelwork
✓	Roof & Wall Cladding
✓	Glazing
✓	Vehicle Doors / Loading Docks
✓	Personnel Doors

Commercial & General
insurance services

Commercial and General Insurance Services Ltd

25th May 2011

TO WHOM IT MAY CONCERN

John Reid & Sons (Strucsteel) Holdings Ltd

As Insurance Brokers to the above, we can confirm that the following insurances are in place with an expiry date of 31st May 2012.

Public / Products Liability

Risks Insured: Legal Liability to third parties for bodily injury or property damage. Including Indemnity to Principals Clause.

Limit of Indemnity: £10,000,000 any one accident and in aggregate in any period of insurance for products supplied. Excess: £2500 Third Party Property Damage.

Insurer: ACE Europe / Lloyds Underwriters. Policy No. 94UK310245

Employers Liability

Risks Insured: Legal liability to employees for death or injury arising out of and in the course of their employment.

Limit of Indemnity: £25,000,000 any one occurrence inclusive of costs. Excess Nil

Insurer: Lloyds Underwriters: Aspen. Policy No. 60978645A09

Contractors All Risks

Risks Insured: Loss of or damage to Insured's equipment anywhere within the UK whilst on Insured contract site, extendible throughout the world.

Limit of Indemnity: £2,000,000 any one contract site. Excess £2500.

Insurer: ACE Europe Ltd. Policy No 94UK310245


Professional Indemnity

Limit of Indemnity: £5,000,000 in the aggregate including costs and expenses. Excess : £10000

Insurer: Lloyds Underwriters: Amlin Policy No. 609/99049 A08
Excess layer: Hiscox.

Please do not hesitate to contact me if any further information is required. All cover is subject to Insurers policy wordings as applicable.

Yours faithfully,


D.R Bugler ACII
Director.

bespoke insurance solutions

Commercial & General Insurance Services Ltd is authorised and regulated by the Financial Services Authority
Registered Address: Elmwood House, Poole Road, Bournemouth, Dorset BH9 5QJ Registered in England No. 09078303

Commercial & General Insurance Services Ltd
Suite C10 Arena Business Centre
Nine Nimrod Way
Ferndown
Dorset
BH21 7WH

Tel: 01202 862 660
Fax: 01202 862 661
www.commercialandgeneral.com
email: info@insurecg.co.uk



BCSA Limited



This is to certify that

John Reid & Sons (Strucsteel) Ltd

has the personnel, organisation, experience, knowledge, equipment, capability and commitment to produce steelwork of the required quality for

*High rise buildings (offices etc over 15 storeys)
Large span portals (over 30m)
Medium/small span portals (up to 30m) and low rise buildings (up to 4 storeys)
Medium rise buildings (from 5 to 15 storeys)
Large span trusswork (over 20m)
Tubular steelwork where tubular construction forms a major part of the structure
Towers and masts
Architectural steelwork for staircases, balconies, canopies etc
Frames for machinery, supports for plant and conveyors
Large grandstands and stadia (over 5,000 persons)
Refurbishment*

*and has been given a Steelwork Contract Value of
Up to £6,000,000**

Gillian Mitchell

Company Registration Number: 617773
BCSA Membership Number: L117
Certificate Valid Until: 30 November 2011

Gillian Mitchell MBE
BCSA Deputy Director General

BCSA, 4 Whitehall Court, Westminster, London SW1A 2ES
Telephone: 020 7839 8566 Fax: 020 7839 4729

Insurance, Certificates & Company Profile



17 September 2010

To whom it may concern

Dear Sir

JOHN REID & SONS (STRUCSTEEL) GROUP

John Reid and Sons (Strucsteel) Ltd has been established for over 80 years and first banked with us in the 1930's.

The Company enjoys an excellent reputation for fulfilling its contracts and obligations to the entire satisfaction of its customers which include overseas Governments and major Corporates and they are able to fulfil contracts to the value of £10m and above.

The bank has approved credit lines of £1.5m + that at the time of writing would be made available to the group on request. The financial strength of the group is currently such that it has no need of these facilities to service current and ongoing contracts.

The Company is very active in the export market and have been involved in a large number of transactions over many years via Documentary Credits from overseas for which they enjoy an excellent record for the presentation, on time, of accurate shipping documents.

In short, we have no hesitation in recommending this company to potential clients as we would consider them entirely sound and good for their normal business engagements.

Yours sincerely



Ian Workman
Head of Solent & Dorset Region
Barclays Corporate

Barclays Corporate is a trading name of Barclays Bank PLC and its subsidiaries. Barclays Bank PLC is registered in England and authorised and regulated by the Financial Services Authority. Registered number is 1026187 and its registered office is 1 Churchill Place, London E14 5HP.

Barclays Corporate
3rd Floor
Barclays House
Ocean Way
Southampton SO14 2ZP

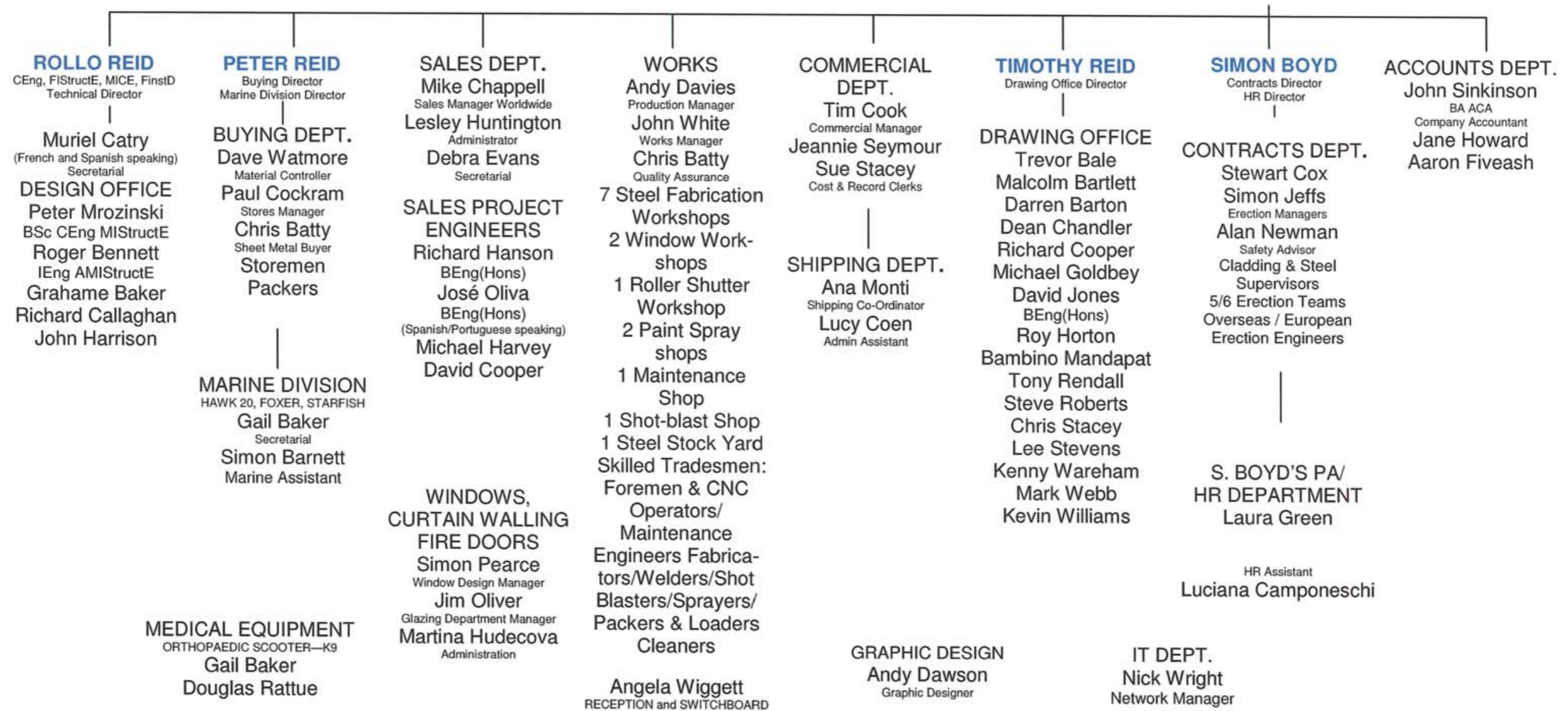
Tel +44 (0) 2380 534013
Fax +44 (0) 2380 534799

www.barclayscorporate.com

1. Company Name	JOHN REID & SONS (STRUCSTEEL) LTD	FOUNDED 1919
2. Postal Address	STRUCSTEEL HOUSE Reid Street, Christchurch, Dorset BH23 2BT, England	Tel: 44(0)1202 483333 [12 lines] Fax: 44(0)1202 470103 Email: sales@reidsteel.co.uk Web: www.reidsteel.com
3. Chairman & Managing Director	Michael Reid, MBE FInstD	
4. Senior Personnel Sales & Customer Service	Mike Chappell Richard Hanson, BEng (Hons) José Oliva, BEng (Hons) (Spanish/Portuguese) Michael Harvey David Cooper Lesley Huntington	Sales Manager (Worldwide) Project Engineer Project Engineer Project Engineer Project Engineer Sales Administrator
5. Senior Personnel Technical/Contract Department	Rollo Reid, BSc, CEng FStructE, MICE, Eur Ing. Peter Reid Timothy Reid Simon Boyd, FInstD John Sinkinson, BA ACA Peter Mrozinski, BSc, CEng, MStructE Tim Cook, FIEX Andy Davies Jim Oliver Ana Monti Alan Newman Simon Jeffs Stewart Cox	Technical Director Supplies & Marine Director Drawing Office Director Contracts Director & Director for Health & Safety Company Accountant Chartered Engineer Commercial Manager Production Manager Glazing Department Manager Shipping Co-Ordinator Company Safety Adviser Erection Manager Erection Manager
6. Name & Address of Bank from whom a reference may be sought	Barclays Corporate Bank PO Box 612, 3rd Floor Barclays House, Ocean Way Southampton SO14 2ZP Mike Morgan – Relationship Director	Tel: 02380 534013 Fax: 02380 534720 Mob: 07500 890055 Email: mike.morgan1@barclays.com
7. DUNS N° (Dun & Bradstreet)	217149947	
8. Registered Company N° & Registered Office	617773 3 Reid Street, Christchurch, Dorset BH23 2BT, England	
9. U.T.R. Number	202 900 6140	
10. VAT Registration Number	GB 186 2184 48	
11. Range of Work Undertaken	The design, fabrication and erection of all types of steel framed structures, including industrial and multi-storey buildings, car parks, aircraft hangars, sports stadia and their associated claddings and equipment, road bridges etc., earthquake resistant structures. Also makers of windows, doors, roller shutter doors and aircraft hangar doors. Marine Division – builders of the famous Hawk 20 unsinkable sea going sailing day boat. Makers of the K9 Orthopaedic trolley for lower leg injuries.	
12. Geographical Areas of Operation	UK and Worldwide	
13. Professional/Trade Associations	Member of: British Constructional Steelwork Association (BCSA), The Steel Construction Institute (SCI), British Airport Services & Equipment Association, British Marine Federation (BMF), Latin America Trade Advisory Group (LATAG), London Chamber of Commerce & Industry (LCCI), Dorset Chamber of Commerce & Industry (DCCI), Association for Sports & Leisure Facility Development & Management, British Safety Council BSC, Centre for Window & Cladding Technology (CWCT), British Airport Services & Equipment Association (BASEA), Accredited Contractor (CHAS) and Constructionline.	
14. Approvals	Registered Qualified Steelwork Constructor "A1" Rating, audited by BCSA. Central Government & MOD Approved list of Works Contractors Ref: L/O/4902/J SLV Welding Institute (Schweisstechnische Lehr-und Versuchsanstalt BERLIN), Centre for Window & Cladding Technology (CWCT), British Airport Services & Equipment Association (BASEA), Accredited Contractor (CHAS) and Constructionline.	

Company Organisation

BOARD OF DIRECTORS: - MICHAEL REID MBE FINSTD, (Chairman and Managing), **ROLLO REID** CEng, FIStructE, MICE, FInstD, **PETER REID, TIMOTHY REID, SIMON BOYD**





REIDsteel

established 1919

John Reid & Sons (Strucsteel) Ltd,
Strucsteel House,
Reid Street,
Christchurch,
Dorset BH23 2BT England

Tel: +44 (0) 1202 483333
Fax: +44 (0) 1202 470103
Email: sales@reidsteel.co.uk
Web: www.reidsteel.com



THE QUEEN'S AWARDS FOR ENTERPRISE:
INTERNATIONAL TRADE 2006, 2008, 2009

